



# Company Profile

## 2017

KWAZULU-NATAL: 80 Davenport Centre, 89 Helen Joseph Road, DURBAN

CAPE REGION: The Southern Right, Streenbras Street, Brenton on Sea, KNYSNA | PO Box 2984, Knysna 6570

Tel: +27 (0)44 381 0712 | Fax: +27 (0)86 569 5554

SOUTH AFRICA

[info@futureworks.co.za](mailto:info@futureworks.co.za) | [www.futureworks.co.za](http://www.futureworks.co.za)

## Overview

We face a future world where natural capital will be the major limiting factor for human well-being and economic productivity. Achieving greater efficiencies and resilience in businesses, the economy and society will be fundamental in unlocking future economic growth and social equity.



At FutureWorks we believe that better decisions today will result in a better tomorrow.

FutureWorks is a Sustainability Consultancy. We support both public and private sector decision-makers in undertaking operational and development planning which is cognisant of natural capital as the supplier of services on which society and the worlds’ economies have come to depend. We also develop and implement green economy projects that build the capacity of people and supports the role of the natural environment in sustaining vibrant economies and human well-being. Our climate change unit provides technical and institutional support to those wanting to better understand their exposure to risks and hazards posed by a changing climate, and identify and implement appropriate adaptive responses. Building resilience to change – both known and unknown - and supporting greater efficiencies in resource use are a central to what we do.

Our team shares a unique interest in helping our clients to build their understanding of the sustainability challenges they face, and of the solutions that exist. Our consulting services offer clients a process to engage in problem solving – and not just a solution or a report as an end-product. We also share a specific interest and ability to develop out-of-the-box solutions to complex problems.

FutureWorks has been in business for 13 years and has built a formidable track record, having provided services to and partnered with the majority of large institutions working on various sustainability issues in South Africa. We are geared for any size project, and any size client (“big” and “small”), for complex challenges and simple ones. We have a diverse and highly experienced team, and call on our wide network of associates and collaborators as needed for specialist inputs. FutureWorks is 90% women-owned, and 51% black-women owned. There are 3 Directors, each of whom leads a practice area within the business. We have offices in KZN (Durban), the Cape region (Knysna) and Gauteng (Pretoria).



## Our Vision and Values

We have a vision of a Future that Works – for people, for businesses, for the economy, and for ecological systems. We acknowledge the difficulty of achieving a “perfect balance”, where all priorities are met, and where everyone benefits. So, we strive to bring a combination of innovation, science and collective wisdom into the process of supporting decision-making, developing plans and strategies, or writing policy. Our aim is

to build consensus and a common understanding of the risks and the chosen solutions through our consulting processes.

## Our Products and Services

FutureWorks provides professional sustainability consulting services in a range of practice areas: environmental planning and management, resource economics, climate change, energy, water, organizational sustainability, project implementation and capacity building.

FutureWorks has also developed a range of products that we offer as part of our consulting packages. We use these tools to complement our consulting services, mainly in providing a structured platform from which to work in supporting decision-making processes, and in providing information to decision makers will assist them in the long term. These products include decision-support models, footprinting tools, a spatial information package for decision-makers, and a sustainability media portal and web-based platform that already has a significant following in South Africa. These products and services are summarised below. Detailed brochures on each of the consulting products can be downloaded from [www.futureworks.co.za](http://www.futureworks.co.za)

## Consulting Products



Eco-futures is an **interactive systems modeling process** that identifies and maps the services supplied by natural and built environments in a specified area or landscape and quantifies how these services may change for specific user groups under different land use or management scenarios. The process is highly integrating, using expert knowledge and wisdom, as well as stakeholder perceptions where relevant, to develop consensus around the supply, demand and levels of dependence on natural and built environment services.



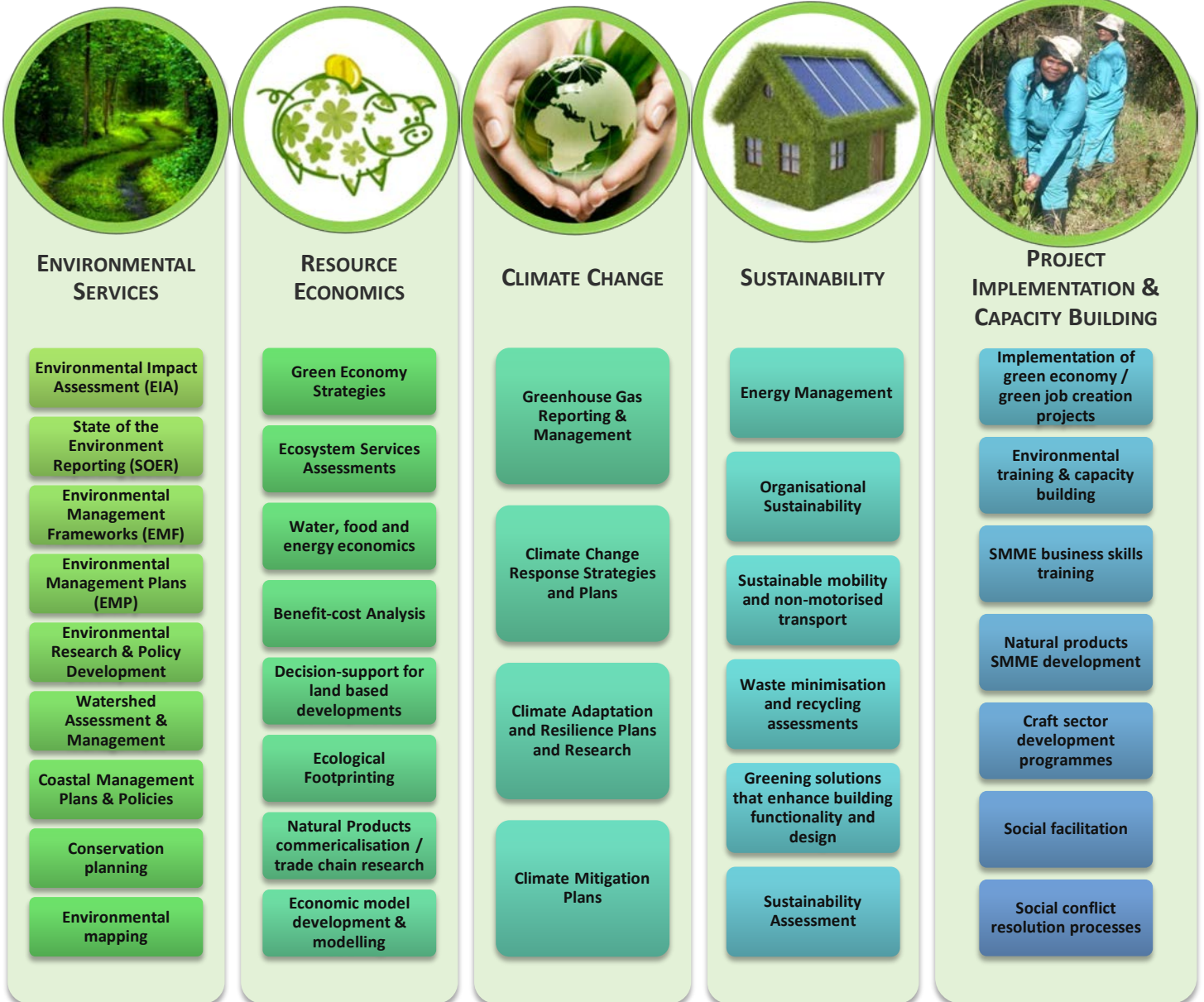
FutureWorks has developed one of the world's first **open-box ecological footprinting tools: Eco-footprint**, which was used to calculate the ecological footprint of the COP17/CMP7 global climate summit in 2011.

The tool can be used to calculate water footprints, energy footprints, waste footprints, carbon footprints and ecological footprints.



Futureworks has developed a low-cost **spatial information package** for small businesses and local government: **MuniMap**. We offer this package to those that need to access spatial information to make decisions, but are not trained in AutoCAD, ArcView or ArcInfo. We use a freeware map reader to display the spatial information – so as many users as necessary can access the spatial information at no extra cost.

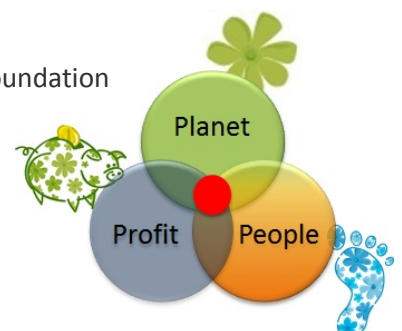
## Professional Sustainability Consulting Services



## Our Track Record

FutureWorks has been in business for 10 years and offers professional consulting services throughout southern Africa. We service and work with:

- ★ **International Agencies** such as the World Bank, UNIDO, GIZ, Rockefeller Foundation
- ★ **National, provincial and local governments** throughout South Africa
- ★ **Agencies** such as DBSA, ICLEI-Africa, SALGA and SEDA
- ★ **Parastatals** such as the CSIR, SANParks and Ezemvelo KZN Wildlife
- ★ **NGO's** such as WWF, WESSA and Wildlands Conservation Trust



- ★ **Research institutions** such as the Water Research Commission, Universities of Pretoria, Stellenbosch, KwaZulu-Natal, Cape Town and Nelson Mandela Metropolitan University
- ★ **Corporates** such as Exxaro, Coal of Africa, Anglo Coal, Anglo Gold Ashanti, Rio Tinto, BHP Billiton, Uranium 1, SAPPI, Mondi, Gem Diamonds, Xstrata, Ivanhoe Mines, Tongaat Hulett and Base Titanium
- ★ **Consulting companies** such as Golder Associates, Imani Development Consulting, SRK Consulting, Groundtruth, Transboundary Africa, Mott Macdonald, Black Balance, EPOCH, Verde Azul, Royal Haskoning DHV, CAMCO and Hyder Consulting
- ★ **Private companies** such as Inframax Holdings, GRID, Stedone Construction, Global Property Investments, Oakhill School, Natal Solvent Recovery (Pty) Ltd, Cotswold Downs Development Company and Fischer Road Water Services Provider Company

## Our Team

FutureWorks is a 90% women-owned, 51% black-owned closed corporation. There are three Directors, each of whom directs a practice area within the business. FutureWorks has a core staff team and a group of associates that are engaged on a project by project basis. We have offices in KwaZulu-Natal, the Southern Cape and Gauteng. Our whole team works nationally.

## Team Member Profiles

### Ms NICCI DIEDERICHS – MANAGING DIRECTOR

#### DIRECTOR: ENVIRONMENTAL SERVICES

Nicci works throughout southern Africa specialising in green economy projects, urban environmental management, environmental design, rehabilitation and natural resource commercialisation for rural SMME development. Having started off working for the eThekweni Municipality as an Environmental Officer, Nicci has now been consulting successfully for 20 years and has established a wide network of collaborators and partners. Key services offered in:

- Environmental Sustainability Practitioner
- Environmental & Green Economy Project & Programme Conceptualisation and Management
- Strategic Environmental Assessment & Management
- Environmental Design, Management & Rehabilitation
- Watershed Management
- Natural Products Commercialisation for SMME development



### Ms KHULILE MAVUNDLA – DIRECTOR

#### DIRECTOR: PROJECT IMPLEMENTATION & CAPACITY BUILDING

Khulile specialises in project implementation, enterprise development skills training, community participation facilitation for Local Economic Development and Integrated Development Planning as well as Social Research. Having started off working as a teacher, she is a dynamic and talented trainer and facilitator who has worked in a wide range of development and natural resource management contexts. Khulile has been instrumental in supporting the establishment of a number of successful natural products SMME's in rural KwaZulu-Natal. She manages large "green job creation" projects in South Africa as part of national government's drive to create employment and restore natural environments. Fields of expertise offered:

- Project Management
- Social and Community Participation Facilitation
- Social Research
- Enterprise Development Skills Training
- Craft Development Services and Training
- Natural products / rural SMME development



**Mr MYLES MANDER – DIRECTOR**  
**DIRECTOR: RESOURCE ECONOMICS**

Myles supports the private and public sector in achieving triple bottom line outcomes in the use of natural assets and the associated ecosystem services. He is best known for solving strategic environmental management problems. His area of focus includes developing new approaches to management of natural resources through creating an understanding of the value of the goods and services provided to people by the natural environment. He provides key services in:

- Ecosystem Services Analysis
- Economic Analysis
- Social-ecological Systems Analysis
- Scenarios Analysis
- Developing Economic Incentives for Environment Management
- Living Environment Design & Management
- Natural Product use, Management & Commercialisation
- Managing Projects Teams for integrated outputs



**Ms MARGARET MCKENZIE - ASSOCIATE**  
**CLIMATE CHANGE & SUSTAINABILITY CONSULTANT**

Margaret is an experienced project manager and facilitator and has been working in the environmental and sustainability sector since 1997. She has an MSc in Environment and Development from the University of Natal. She specialises in policy and strategic development with a particular focus on climate change and energy management. Fields of expertise offered:

- Policy and Strategy Development
- Facilitation and Consultation
- Climate Change Consulting
- Energy Management Consulting
- Greenhouse Gas Reporting and Management
- Organisational Sustainability
- Packaging and Communicating information on Sustainability
- Project Management
- Sustainability Research and Reporting



**Prof JAMES BLIGNAUT - ASSOCIATE**  
**ENVIRONMENTAL & RESTORATION ECONOMIST**

James is an Associate Consultant. He specialises in environmental and natural resource economics, focusing on food, water, energy and the restoration of natural capital. Over the past 25 years he has played an integral part in a number of projects/initiatives across Africa with respect to restoration economics for governments, the private sector and NGO's. Key services include:

- Economic valuation of ecosystem goods and services
- Cost-benefit analysis of restoration and the management of ecosystem goods and services
- Energy economics
- Water economics
- Food systems, including the combatting of malnutrition through integrative planning



**Ms AMANDA BOTES - ASSOCIATE**  
**SUSTAINABILITY CONSULTANT**

Amanda specialises in sustainability research, sustainability communication, climate change consulting and project management and has been working in the sustainability field since 2010. She has a MSocSci in Geography from the University of KwaZulu-Natal. Fields of expertise offered:

- Sustainability Research and Reporting
- Greenhouse Gas Reporting and Management
- Climate Change Consulting
- Policy and Strategy Development
- Packaging and Communicating information on Sustainability



- Organisational Sustainability
- Project Management, stakeholder Liaison and Event Coordination

### Mr TREVOR WOLF - ASSOCIATE

#### ENVIRONMENTAL MANAGEMENT CONSULTANT & GIS SPECIALIST

Trevor is an Associate Consultant. He specialises in using Geographic Information Systems (GIS) to support environmental management decision making. Over the past 12 years he has played an integral part in a number of Regional, National, Provincial and local conservation GIS projects. Prior to this, he worked for the KwaZulu-Natal Nature Conservation Services for 11 years as a Research Technician, during which time he gained extensive experience in protected area and conservation management. Key services include:

- GIS implementation, planning, data collation & compilation, data capture, spatial analysis, technical support and training
- Environmental / spatial database design and development
- Conservation Planning
- Environmental and Protected Area Management Plans and advisory services



### Mr CORI HAM - ASSOCIATE

#### FOREST MANAGEMENT & ENTERPRISE DEVELOPMENT SPECIALIST

Cori is an Associate Consultant. He holds an Honours degree in Forestry, and a MBA. He specialises in sustainable use and management of forest resources, and business enterprise development in the forestry and natural products sector. Key services include:

- Forest management and certification
- Forestry enterprise development
- Forest economics and policy



## Portfolio of Recent Projects

Project Name & Description	Client Name
<p><b><i>Carbon Tax Modelling for South Africa</i></b>            FutureWorks was appointed by the World Bank to support the South African government in understanding and modelling the proposed implementation of a carbon tax on all economic and social sectors in the country.</p>	World Bank
<p><b><i>Climate Change Adaptation Support for the Implementation of the Durban Adaptation Charter</i></b>            The Durban Adaptation Charter commits Local Governments to local climate action in their jurisdictions that will assist their communities to respond to and cope with climate change risks thereby reducing vulnerability. The charter has over 1000 signatories and the eThekweni Municipality currently provides the secretariat services for the charter. FutureWorks has been contracted for a three year period to support the implementation of the charter by eThekweni Municipality.</p>	eThekweni Municipality
<p><b><i>Comparison of Climate Adaptation Strategies in 3 South African Municipalities</i></b>            FutureWorks was contracted by UKZN to assist with the preparation of a journal article that evaluated the evolution of climate adaptation as a municipal governance priority. The paper compared the experiences of three municipalities in South Africa: eThekweni, City of Cape Town and Theewaterskloof Municipality. The project was a joint initiative between the University of KZN's Development Studies unit, and the University of Cape Town's African Centre for Cities.</p>	University of KwaZulu-Natal, African Centre for Cities and AFD

<p><b>Cities and Climate Change: Transition Research</b></p> <p>FutureWorks was appointed to research global best practice in institutional and policy mechanisms for transitioning cities towards a climate responsive state. The work included in-depth case studies of KwaDukuza and Steve Tshwete Municipalities - both of which are rapidly growing Category B municipalities with capacity and resource constraints. The outputs included a paper on the transition research results, and a strategy for transitioning each of the two case study municipalities.</p>	<p>ICLEI-Africa</p>
<p><b>Durban Climate Change Adaption &amp; Mitigation Strategy</b></p> <p>Urban Earth and FutureWorks were appointed by the eThekweni Municipality to prepare a Climate Mitigation and Adaptation Strategy for the eThekweni Municipality. The project process involved extensive public and stakeholder consultation, including the use of the internet and social media to reach segments of the municipal populace that are usually not able to engage with high-level municipal planning processes.</p>	<p>eThekweni Municipality, Urban Earth</p>
<p><b>Cost-benefit Analysis for Mkuju Uranium Mine</b></p> <p>FutureWorks was appointed by Epoch Resource to undertake a cost-benefit analysis of the proposed Mkuju Uranium Mine in Tanzania. The mine was proposed for a section of the Selous Game Reserve (a World Heritage Site), and the cost benefit process aimed to understand the costs and benefits of the mine for Tanzanian society.</p>	<p>Epoch Resource, Uranium 1</p>
<p><b>Economics Assessment - Eskom Nuclear Power Plant EIA</b></p> <p>FutureWorks was subcontracted by Imani Developments to conduct an economic evaluation of the impact on the tourism industry of the development of nuclear power stations at 3 possible sites on the coast of South Africa.</p>	<p>Imani Developments (Pty) Ltd</p>
<p><b>Economics Assessment of the Proposed Port Expansion, Durban</b></p> <p>FutureWorks was appointed as part of a team of professionals assessing the potential impacts of a proposal to extend port infrastructure within the Durban Harbour area.</p>	<p>Marine &amp; Estuarine Research and eThekweni Municipality</p>
<p><b>Feasibility Assessment of Payment for Ecosystem Services for the Baviaans, Kromme and Kouga Catchments.</b></p> <p>Collection, mapping and modelling of ecosystems, hydrography of the three river catchments to determine the change in ecosystem services supply (water services) from these catchments under different land use management and river management scenario's.</p>	<p>SANBI/Working for Water</p>
<p><b>KZN Vulture Trade Survey</b></p> <p>FutureWorks was appointed in 2007 by Ezemvelo KZN Wildlife to undertake a survey of the trade in Vulture parts for traditional medicinal purposes in eThekweni, KZN. The study involved monitoring the trade in a number of KZN medicinal markets and interviews with experts around the province. The survey concluded that a number of Vulture species are under threat from increased demand for Vulture for medicinal purposes, and a range of recommendations were made in respect of an intervention / management strategy that could be adopted to address the threat.</p>	<p>Ezemvelo KZN Wildlife</p>
<p><b>Maloti Drakensberg Payment for Ecosystem Services Feasibility Assessment.</b></p> <p>FutureWorks was appointed to evaluate the natural ecosystems and services generated in the Okhahlamba Drakensberg. Mapping and modelling was used to determine changes in water quality and river flows from this under different land use management scenarios. The feasibility of using Payment for Ecosystem Services to fund community based management of natural resources was investigated.</p>	<p>Maloti Drakensberg Transfrontier Project</p>



<p><b>National Medicinal Plants Trade Survey</b></p> <p>FutureWorks was appointed in 2007 by the National Department of Trade and Industry to undertake a national survey of the trade in medicinal plants in South Africa. The study found that the trade in traditional medicines in South Africa is estimated to be worth R2.9 billion per year, representing 5.6% of the National Health budget. With 27 million consumers, the trade is vibrant and widespread. There are at least 133 000 people employed in the trade, with a large percentage of rural women. The plant trade is a key rural industry and business incubator. However, supply of plant material (some 771 species) and medicines is not sustainable. All plants are harvested from the wild, with popular species becoming locally extinct and being traded at very high prices. Much of the current research and development effort focuses in novel drugs research, with little effort being directed at improving the current harvesting, production, processing, storage and treatment technology. The future of the traditional medicines trade and its benefits are uncertain.</p>	<p>SA Department of Trade and Industry</p>
<p><b>Eco-Futures Process – Kisanfu and Tenke</b></p> <p>FutureWorks was sub-contracted by Groundtruth and SRK Consulting in terms of their principal contract with FXC, which was undertaking an EIA for Kisanfu and Tenke copper mines in the DRC. FutureWorks undertook an ecosystem services assessment as required to meet International Finance Corporation performance standard 6 – requiring an understanding of the impacts of the mines on biodiversity and ecosystem services.</p>	<p>Groundtruth, SRK Consulting, FXC</p>
<p><b>Eco-Futures Process - Kokstad Integrated Spatial Development Plan</b></p> <p>FutureWorks was sub-contracted by City Thinkspace in terms of its principal contract with the Kokstad Municipality to develop an Integrated Spatial Development Plan for the municipal area. Our role was to identify the environmental opportunities and constraints associated with the area for inclusion in the ISDP and made recommendations for the environmental planning components of the project. This was done using the Eco-Futures Process in which ecosystem goods and services flows were assessed for the status quo situation, and under future development scenarios.</p>	<p>City Thinkspace and Kokstad Municipality</p>
<p><b>Eco-Futures Process – Kwale Titanium Mine</b></p> <p>FutureWorks was appointed by Base Resources to undertake an ecosystem services assessment of the proposed Kwale Titanium Mine in Kenya. The process was undertaken to meet International Finance Corporation performance standard 6 – requiring an understanding of the impacts of the mine on biodiversity and ecosystem services.</p>	<p>Base Resources Ltd (Australia)</p>
<p><b>Eco-Futures Process - Mafube Coal Mine</b></p> <p>FutureWorks was contracted by Golder Associates to undertake an ecosystem services assessment of the proposed Mafube Colliery in Mpumalanga Province, South Africa. This process was undertaken to inform an EIA process for the proposed mine with an emphasis on assessing remediation options.</p>	<p>Golder Associates and Anglo Coal</p>
<p><b>Eco-Futures Process – Vele</b></p> <p>FutureWorks was contracted to undertake an environmental offsets design for Vele Colliery in the Limpopo Province of South Africa. The Eco-Futures process was used to inform the design of the environmental offsets.</p>	<p>Transboundary Consulting Africa, Coal of Africa</p>
<p><b>Eco-Futures Process: Elders Colliery Participatory Ecosystem Services Supply &amp; Demand Assessment</b></p> <p>FutureWorks was engaged by SRK Consulting to undertake an analysis of the supply of and demand for ecosystem services within the Elders Colliery landscape of the Mpenjati Nature Reserve. This was an Eco-Futures process, and it was employed to inform the design of mitigation measures for an EIA process.</p>	<p>SRK Consulting</p>
<p><b>Eco-Futures Process: Kriel Colliery Life Expansion</b></p> <p>FutureWorks was engaged by SRK Consulting to undertake an analysis of the supply of and demand for ecosystem services within the Kriel landscape. This was an Eco-Futures process, and it was employed to inform the design of mitigation measures for an EIA process.</p>	<p>SRK Consulting</p>

<p><b>Eco-Futures Process: Lake Nhlabane Sustainability Study</b>          FutureWorks was engaged by Hydrological Research &amp; Training Specialists CC in association with Richards Bay Minerals (RBM) to undertake an Ecosystem Services Risk Assessment within the Nhlabane catchment for the purposes of supporting RBM in their endeavours to promote water security.</p>	Hydrological Research & Training Specialists CC & Richards Bay Minerals
<p><b>Eco-Futures Process: Mayoko Ecosystem Services Assessment</b>          FutureWorks was engaged by Golder Associates to undertake an analysis of the supply of and demand for ecosystem services within the Mayoko landscape for informing the International Electrotechnical Commission (IEC) performance Standard 6 within an EIA process</p>	Golder Associates
<p><b>Eco-Futures Process: Thabametsi</b>          FutureWorks was engaged by Golder Associates to undertake an analysis of the supply of and demand for ecosystem services within the Thabametsi Colliery. This was an Eco-Futures process, and it was employed to inform the design of mitigation measures for an EIA process.</p>	Golder Associates
<p><b>Eco-Futures Process: Zonnebloem Participatory Ecosystem Services Supply &amp; Demand Assessment</b>          FutureWorks was engaged by Golder Associates to undertake an analysis of the supply of and demand for ecosystem services within the Zonnebloem landscape. This was an Eco-Futures process, and it focused on assessing cumulative impacts of a number of concurrent mine developments within the landscape. This was in association with Xstrata.</p>	Golder Associates Africa (Pty) Ltd
<p><b>Eco-Futures Process: Zulti South Participatory Ecosystem Services Supply &amp; Demand Assessment</b>          FutureWorks was engaged by GroundTruth to undertake an analysis of the supply of and demand for ecosystem services within the Zulti South landscape in Richards Bay. This was an Eco-Futures process, and it focused on assessing cumulative impacts of a number of concurrent mine developments within the landscape.</p>	Groundtruth
<p><b>Estuary Models</b>          FutureWorks was engaged by Royal Haskoning DHV to undertake a participatory Ecosystem Services Supply and Demand Assessment for the Mpenjati Estuary on the KZN south coast for the purposes of developing an estuary of management plan.</p>	SSI
<p><b>Kamoa Phase One Ecosystem Goods &amp; Services Assessment</b>          FutureWorks was engaged by Golder Associates to undertake an analysis of the supply of and demand for ecosystem services within the Kamoa landscape for informing the International Electrotechnical Commission (IEC) performance Standard 6 within an EIA process.</p>	Golder Associates Africa (Pty) Ltd, Zambia
<p><b>Knysna Watershed Ecosystem Services Assessment</b>          FutureWorks was appointed by SANParks to undertake an assessment of ecosystem services supply and demand in the Knysna Watershed. The key purpose of the analysis was to bring together different stakeholders in the watershed to build a common understanding of how their respective management actions affect the ecological functionality of the Knysna Estuary (which is the highest priority estuary in South Africa from a conservation perspective), and associated inter-dependencies in terms of the common goal of maintaining a high quality coastal environment in the Knysna region.<sup>9</sup></p>	SAN Parks
<p><b>Nimba Ecosystem Services Phase 1 and 2:</b>          FutureWorks was engaged by Golder Associates to undertake an Ecosystem Services Risk Assessment for informing the International Electrotechnical Commission (IEC) performance Standard 6 within an EIA process. The analysis included a baseline assessment and an impact assessment for the proposed iron ore mine development within the Nimba World Heritage Site.</p>	Golder Associates (Pty) Ltd
<p><b>COP17/CMP7 Ecological Footprint</b>          FutureWorks was appointed by the eThekweni Municipality to develop an Ecological Footprinting model for events, and to implement this for COP17/CMP7 held in Durban in November and December of 2011.</p>	eThekweni Municipality: Environmental Planning & Climate

	Protection Department
<p><b>Application for Environmental Authorisation subject to Basic Assessment: Aeroville Cemetery, Somerset East</b></p> <p>FutureWorks was appointed by the Blue Crane Route Municipality to undertake an Application for Environmental Authorisation, subject to Basic Assessment, for the proposed development of a cemetery and associated access road, in Somerset East (Eastern Cape). The proposed cemetery was approximately 3.4Ha in extent.</p>	Blue Crane Route Municipality, Cacadu District, Eastern Cape
<p><b>Application for Environmental Authorisation subject to Basic Assessment: Lungisisa Indlela Village</b></p> <p>FutureWorks was appointed by LIV to undertake the necessary Applications for Environmental Authorisation for development of an orphanage in the Cottonlands Area, near Verulam in the eThekweni Municipal Area. This included wastewater infrastructure, stormwater infrastructure, roads, water infrastructure and 2 dams.</p>	LIV Village
<p><b>Application for Environmental Authorisation subject to Basic Environmental Assessment: Dolphin Point Apartments, Umdloti, Durban</b></p> <p>FutureWorks conducted a Basic Assessment for the development of an apartment building, containing three residential apartments, on North Beach Road in Umdloti. This contract included preparing an Environmental Management Plan to ensure that the sensitive coastal environment is not impacted on negatively during construction of the development.</p>	Liviero Civils
<p><b>Application for Environmental Authorisation subject to Basic Environmental Assessment: KwaMashu Entrepreneurial Support Centre, KwaMashu, Durban</b></p> <p>FutureWorks conducted a Basic Assessment for the development of the KwaMashu Entrepreneurial Centre on Erf 503, of KwaMashu G Section. This development represents a substantial investment, in the order of R80 million, in the KwaMashu area, and will consist of a private-sector component, SMME Business Park, and a Wood and Furniture SMME Incubator. FutureWorks role included providing inputs into the planning and design of the project, impact assessment, and development of an Environmental Management Plan.</p>	eThekweni Municipality: Economic Development Unit
<p><b>Application for Environmental Authorisation subject to Basic Environmental Assessment: Phase 2 Boardwalk on Knysna Estuary Edge, George Rex Dv, Knysna</b></p> <p>FutureWorks has been appointed by the Knysna Municipality to undertake an Application for Environmental Authorisation subject to Basic Assessment for the proposed extension of a boardwalk along the edge of the eastern shores of the Knysna Estuary from Howard Drive to the Heads.</p>	Knysna Municipality
<p><b>Application for Environmental Authorisation subject to Basic Environmental Assessment: Subdivision and Rezoning of Public Open Space in Amanzimtoti, Durban</b></p> <p>FutureWorks has been contracted by the eThekweni Municipality to undertake a Basic Assessment process for the rezoning of a portion of land under municipal ownership, in the coastal zone, South of Durban, from Public Open Space to Special Residential.</p>	eThekweni Municipality: Real Estate Unit
<p><b>Application for Environmental Authorisation subject to Environmental Impact Assessment: Cotswold Energy Centre, Hillcrest, Durban</b></p> <p>Nicci Diederichs was appointed to conduct an Environmental Impact Assessment for a fuel filling station and associated retail complex in Inanda Road, Hillcrest (Durban).</p>	Global Property Investments (Pty) Ltd
<p><b>Application for Environmental Authorisation subject to Environmental Impact Assessment: Sanaquam Health and Leisure Resort, central KZN Drakensberg</b></p> <p>FutureWorks completed an Environmental Impact Assessment for the development of a major new health and leisure resort in the Cathkin Park area of the KwaZulu Natal Drakensberg. The development investment is in the order of R200 million and will include a health spa, hotel / lodge and a number of timeshare units. FutureWorks role included environmental design, impact assessment and development of an estate environmental management programme.</p>	Afriquest

<p><b>Application for Environmental Authorisation subject to Scoping: Ikhaya Lobomi Community Care Centre, west of Durban</b></p> <p>FutureWorks was appointed by the eThekweni Municipality to undertake an Application for Environmental Authorisation subject to Scoping for the proposed development of a community care centre in a rural area west of Durban.</p>	<p>eThekweni Municipality</p>
<p><b>Application for Environmental Authorisation subject to Scoping: Inthathakusa Community Tourism Centre</b></p> <p>FutureWorks was appointed to undertake an Environmental Scoping Process for the proposed development of a community tourism centre in Inthathakusa, Inanda, west of Durban.</p>	<p>eThekweni Municipality</p>
<p><b>Application for Environmental Authorisation subject to Scoping: Umgababa Precinct, Durban</b></p> <p>FutureWorks was appointed by the eThekweni Municipality to undertake an Application for Environmental Authorisation subject to Scoping for the proposed development and upgrading of the Umgababa precinct, South of Durban.</p>	<p>eThekweni Municipality</p>
<p><b>Application for Amendment of Waste Management License, Application for Waste Management License, and Registration of Hazardous Waste Storage Facility - Natal Solvent Recovery (Pty) Ltd, Westmead</b></p> <p>FutureWorks undertook various environmental assessments and applications for waste management licenses in respect of a proposed doubling of processing capacity at the Natal Solvent Recovery plant, which recovers solvents and oily wastes from pre-existing hazardous waste streams. In addition, waste storage facilities were to be expanded.</p>	<p>Natal Solvent Recovery (Pty) Ltd</p>
<p><b>Application for Environmental Authorisation, subject to Basic Assessment, for the proposed removal of obstructions in the Klein Brak River Estuary, Mossel Bay</b></p> <p>FutureWorks undertook an assessment of the impact of removing a number of derelict infrastructure features in the Klein Brak River Estuary that were thought to be contributing to risk of flooding of surrounding residential areas.</p>	<p>Mossel Bay Municipality</p>
<p><b>Application for Environmental Authorisation, subject to Basic Assessment, for the proposed development of Timbali Memorial Park, Waterfall, Durban</b></p> <p>FutureWorks undertook an environmental assessment for the proposed development of a new memorial park (cemetery and remembrance walls) for a site in Waterfall, Durban.</p>	<p>Private developer</p>
<p><b>Application for Environmental Authorisation, subject to Basic Assessment, for the proposed development of a new municipal office complex for Sisonke District Municipality on Umngeni Farm, Ixopo</b></p> <p>FutureWorks undertook an assessment for the development of a new municipal office complex on former farmlands in an area immediately outside the centre of Ixopo.</p>	<p>Sisonke District Municipality</p>
<p><b>Application for Environmental Authorisation, subject to Basic Assessment, for the proposed development of a residential housing estate on ERF4932, Knysna</b></p> <p>FutureWorks undertook an environmental assessment of the proposed development of various densities and forms of residential housing and an equestrian facility on land surrounding the new campus of Oakhill School in Knysna.</p>	<p>Acacia Ways Properties (Pty) Ltd</p>
<p><b>Application for Environmental Authorisation, subject to Basic Assessment, for the proposed development of a new school campus for Oakhill School, Knysna</b></p> <p>FutureWorks undertook the environmental assessment process for the proposed development of a new school and sports campus for Oakhill School on ERF4932, Knysna. The project involved the construction of a pre-school, primary and high school campus, sports facilities, boarding establishment, access roads and two irrigation dams.</p>	<p>Oakhill Sports Campus (Pty) Ltd</p>

<p><b>EMPRs for the upgrading of buildings at Durban Herbarium &amp; National Botanical Gardens, Pietermaritzburg</b></p> <p>FutureWorks was appointed to develop Environmental Management Programmes and undertake the required heritage impact assessments for the proposed demolition, upgrading and construction of buildings and the KZN Herbarium in Durban, and at the National Botanical Garden in Pietermaritzburg.</p>	SANBI
<p><b>Development of Municipal Energy Efficiency &amp; Renewable Energy Strategies &amp; Action Plans</b></p> <p>FutureWorks was appointed by SALGA to develop Sustainable Energy Strategies for 5 municipalities, and a range of Knowledge Sharing Products aimed at supporting local governments in South Africa to engage in energy efficiency and renewable energy projects and activities. The 5 municipalities for which Sustainable Energy Strategies were developed were: Mbombela, Sol Plaatje, Rustenburg, Polokwane and King Sabata Dalindyebo Municipalities. The Knowledge Sharing Products that were developed included: Guideline on Reducing Energy Poverty in Low Income Households, Guideline on Energy Efficiency and Renewable Energy in Water and Wastewater Infrastructure, Toolkit on Financing Energy Investments, Case Study on Performance Contracting for Energy Efficiency in Cape Town, Case Study on Institutional Arrangements for Energy Efficiency in eThekweni, Sol Plaatje and Tshwane, and Case Study on Energy Efficiency Demand Side Management in Polokwane.</p>	SALGA
<p><b>Tswelopele Integrated Environmental Management Plan</b></p> <p>Preparation of an Integrated Environmental Management Plan comprising an environmental policy statement, identification and prioritisation of environmental issues, and an implementation action plan.</p>	Tswelopele Local Municipality
<p><b>Coastal Management Plan - Durban South</b></p> <p>FutureWorks was appointed by the eThekweni Municipality to prepare a Coastal Management Plan for the Durban South Basin area, extending from the city centre to Umbogintwini.</p>	eThekweni Municipality
<p><b>Coastal Management Plan - Umkomaas</b></p> <p>FutureWorks was appointed to prepare the Coastal Management Plan for the Umkomaas area, South of Durban.</p>	Maluleke Luthuli Assocs
<p><b>Coastal Management Plan and Local Area Plan - Ohlanga Tongati</b></p> <p>FutureWorks was appointed to prepare a Local Area Plan and Coastal Management Plan for the Ohlanga Tongati area, north of Durban.</p>	eThekweni Municipality
<p><b>Development of a Concept for the Working for Ecosystems Programme, eThekweni Municipality</b></p> <p>Following an idea had by the FutureWorks team to assist the municipality access national and other funding to implement environmental restoration and management works, we were appointed to develop this concept into a short plan which the Environmental Planning and Climate Protection Department could develop further into a fully-fledged programme.</p>	eThekweni Municipality
<p><b>Development of a Densification Strategy for the eThekweni Municipality</b></p> <p>FutureWorks was appointed as part of a team of consultants, led by Royal Haskoning DHV, to research and prepare a Densification Strategy for the eThekweni Municipality. The project involved an assessment of the historical pattern of densification within the municipal area, and proposed a strategy for encouraging / incentivising desired forms of densification in appropriate areas, and the management of densification pressures in areas where not appropriate / desired. The project involved a "social learning process" which actively engaged a wide range of municipal in the debates around densification, and conceptualisation of an appropriate strategy to manage densification going forward. FutureWorks provided the key "environmental planning" expertise on this project.</p>	Royal Haskoning DHV and eThekweni Municipality

<p><b>Environmental Management Framework: Outer West Corridor Study and Cato Ridge Local Area Plan (LAP)</b></p> <p>FutureWorks was appointed by ARUP as a subcontract to its appointment by the eThekweni Municipality to prepare the Environmental Management Framework for the Outer West Corridor Study (between Hillcrest and Cato Ridge in Durban) and Environmental Management guidelines for the Cato Ridge LAP. This involved facilitating negotiations between municipal departments around the development of new industry in grassland areas that were of high conservation value.</p>	<p>ARUP, eThekweni Municipality</p>
<p><b>Environmental Management Framework: Ugu District Municipality</b></p> <p>FutureWorks was engaged by Mott MacDonald to undertake an Ecosystem Services Supply and Demand Assessment to identify development opportunities and constraints for informing the Ugu Environmental Management Framework.</p>	<p>Mott MacDonald South Africa (Pty) Ltd</p>
<p><b>Environmental Management Policy and Implementation Plan: Blue Crane Route Municipality</b></p> <p>FutureWorks was appointed by the Blue Crane Route Municipality to prepare an Environmental Management Plan for integration into the municipality's IDP. The EMP provides a broad environmental management policy framework for the municipality as well as detailed programme and project interventions to address key environmental management issues, opportunities and constraints in the municipal area. The EMP also included a spatial map of environmental assets and control zones within the municipal area for use in the municipality's Spatial Development Framework, Spatial Development Plans and Land Use Management Systems.</p>	<p>Blue Crane Route Municipality, Cacadu District, Eastern Cape</p>
<p><b>eThekweni Metropolitan Municipality Environmental Services Management Plan</b></p> <p>FutureWorks was appointed by the eThekweni Municipality to establish an ecosystem services management plan and policy for the newly expanded eThekweni Municipal Area (including Durban). The project started with a re-conceptualisation of the role that open spaces play in the municipal landscape. This involved a shift in mind set from perceptions of open spaces as "undeveloped lands" and "green preserves" for use by the elite, to open spaces as valuable assets that provide a range of goods and services for the benefit of all municipal residents. The project included investigation into possible sustainable management scenarios for the environmental service supply system. A policy for management and use of the open spaces making up the system was prepared.</p>	<p>eThekweni Municipality</p>
<p><b>eThekweni Strategic Catchment Assessment</b></p> <p>FutureWorks developed an indicator and assessment framework for the assessment of environmental status quo in river catchments, using ecosystem services as the metric to measure state of the environment. This method was applied in the eThekweni Municipal Area for all 16 river catchments that fall within this metropolitan municipality. FutureWorks has recently been appointed to further refine this methodology and implement it using updated current data.</p>	<p>eThekweni Municipality</p>
<p><b>Expansion Concept and Plan for the Durban Botanic Gardens</b></p> <p>FutureWorks was appointed to prepare a development concept for the future development of the Durban Botanic Gardens. The project included the drafting of a spatial expansion plan, as well as a concept for the development of the Garden Window Project - a project to showcase the "use" of plants by people. The project has subsequently been implemented by the Municipality.</p>	<p>eThekweni Municipality</p>
<p><b>Local Area and Environmental Plan - Piesangs River Floodplain, Bridge City, Durban</b></p> <p>FutureWorks was appointed to develop a local area plan, incorporating environmental protection and management requirements for the Piesangs River Floodplain in the KwaMashu-Ntuzuma area, west of Durban.</p>	<p>eThekweni Municipality</p>

<p><b>Review of the Integrated Environmental Management Plan and Coastal Zone Management Plan for Buffalo City Metropolitan Municipality</b></p> <p>FutureWorks was appointed by the Buffalo City Metropolitan Municipality to undertake a review of its 2004 IEMP and CZMP. These plans, which were 10 years old when the review was conducted, required to be updated to address new legislative requirements that had emerged in the interceding years, as well as to address new and emerging environmental issues and challenges, including climate change. The project included consultation with municipal sectors, and other stakeholder groups in the municipality, to obtain input into the revised plans.</p>	<p>Buffalo City Metropolitan Municipality</p>
<p><b>Scenarios Planning for Richards Bay Minerals</b></p> <p>FutureWorks was contracted to assist Richards Bay Minerals to understand the social, ecological and economic implications of future planned growth / development scenarios.</p>	<p>Institute of Natural Resources</p>
<p><b>South Illovo Local Area Plan (LAP)</b></p> <p>FutureWorks undertook the environmental assessment and planning aspects required as part of the process of developing a Local Area Plan and Implementation Plan for the South Illovo area in eThekweni Municipality.</p>	<p>Black Balance Projects (Pty) Ltd</p>
<p><b>Spatial Development Framework: Hibiscus Coast Municipality</b></p> <p>FutureWorks was sub-contracted by Iyer Urban Design Studio in terms of its principal contract with the Hibiscus Coast Municipality to develop an Integrated Spatial Development Framework for the municipal area. Our role was to undertake the environmental planning component of the work.</p>	<p>Iyer, Hibiscus Coast Municipality</p>
<p><b>Spatial Development Framework: Ugu District Municipality</b></p> <p>FutureWorks was sub-contracted by Iyer Associates in terms of its principal contract with the Ugu District Municipality to develop an Integrated Spatial Development Plan for the municipal area. Our role was to undertake all aspects of the environmental planning and develop an environmental framework as part of the SDP.</p>	<p>Golder Associates Africa</p>
<p><b>Spatial Development Framework: Umhlabuyalingana District Municipality</b></p> <p>FutureWorks was sub-contracted by Inhloso Planning CC in terms of its principal contract with the Umhlabuyalingana Municipality to develop an Integrated Spatial Development Framework for the municipal area. Our role was to undertake the environmental planning &amp; community facilitation component of the work.</p>	<p>Inhloso Planning CC, Umhlabuyalingana Municipality</p>
<p><b>uMhlathuze Municipality Environmental Services Management Plan and Policy</b></p> <p>FutureWorks was appointed by the Umhlathuze Municipality to prepare an Environmental Services Management System, Plan and Policy for the municipal area (encompassing Richards Bay and Empangeni). The plan included an Environmental Services Management Policy, a natural asset map, and catchment level plans giving guidance on land use management that would ensure a sustained delivery of high quality environmental goods and services. This process yielded a Conservation Plan, which commits the municipality to protecting and managing high priority conservation areas, and releases other low priority areas for strategic industrial installations.</p>	<p>uMhlathuze Municipality</p>
<p><b>Development of a Green Economy Strategy for KwaZulu-Natal</b></p> <p>FutureWorks worked with Catherine Sutherland and her team from the University of KwaZulu-Natal in developing a Green Economy Strategy for KwaZulu-Natal.</p>	<p>KZN Department of Economic Development &amp; Tourism</p>
<p><b>Ethekweni Ward 27 Physical and Socio-Economic Profile</b></p> <p>The purpose of the study was to identify and define physical and socio-economic challenges and the community needs in order to develop an action plan or other initiatives to improve the quality of life for the local people. The profile was aimed at bringing a positive change in urban planning, providing enabling environment for local economic development etc.</p>	<p>The Ethekweni Municipality: TRUMP</p>

<p><b>Facilitation of 2010 Traders Market in Durban</b></p> <p>FutureWorks was appointed by eThekweni Municipality’s Strategic Projects Unit to organise, manage, and run the 2010 Traders Markets for the 2010 FIFA World Cup™ in Durban. The vision of this market was to create a platform for the 2010 World Cup visitors which would enable them to discover the South African creatively designed Arts &amp; Crafts, fashion, food and experience the warm welcoming culture of the Zulu people and their amazing talent!</p> <p>The market objectives are as follows:</p> <ul style="list-style-type: none"> <li>• To afford local businesses the opportunity to showcase and trade their merchandise to the international customers</li> <li>• To ensure that uniqueness of South Africa, Durban in particular is showcased through the merchandise that got traded by businesses in this market</li> <li>• To provide a networking opportunity for SMMEs with international, national, provincial and local support agencies and structures.</li> </ul>	<p>eThekweni Municipality: Strategic Projects Unit</p>
<p><b>Greening Durban 2010 – Greening the 2010 FIFA World Cup in Durban</b></p> <p>Nicci Diederichs, Managing Director of FutureWorks, was appointed by the eThekweni Municipality to co-ordinate the development and implementation of a “Greening Programme” for the 2010 World Cup soccer event in Durban. This involved the development of a strategy and work plan for the programme, and the development and management of the implementation of a R25.5 million worth of projects aimed at achieving maximum environmental sustainability in the following areas:</p> <ul style="list-style-type: none"> <li>• Energy efficiency</li> <li>• Water Conservation</li> <li>• Sustainable waste management</li> <li>• Sustainable transportation systems</li> <li>• Biodiversity protection</li> </ul> <p>The Greening Programme focused on the following targets for the event :</p> <ul style="list-style-type: none"> <li>• Achieving carbon neutrality for the event</li> <li>• Minimising water use and pollution impacts</li> <li>• Minimising energy use and maximising renewable energy resources</li> <li>• Protecting and enhancing biodiversity for improved ecosystems service supply</li> <li>• Creating more sustainable transport systems</li> <li>• Minimising waste and developing waste recycling / re-use systems</li> </ul> <p>The programme also has a significant awareness-raising and advocacy component which has resulted in the following publications:</p> <ul style="list-style-type: none"> <li>• eThekweni Green Guideline Series</li> <li>• Durban’s Nature Attractions and Outdoor Experiences</li> </ul>	<p>eThekweni Municipality: Environmental Planning &amp; Climate Protection Department</p>
<p><b>Greening the UNFCCC COP17/CMP7 in Durban</b></p> <p>FutureWorks was appointed by the eThekweni Municipality to support the development, direction and implementation of a Greening Programme for the UNFCCC COP17/CMP7 event held in Durban in 2011. Our key role was to build capacity in the municipality through this process, transferring mega-event greening skills to municipal staff. Our role also included managing a number of the key greening projects associated with the programme, including carbon footprinting of the event, an ecological footprinting process, and the establishment of a community-ecosystem based adaptation project for the offsetting of the unavoidable carbon footprint associated with the event. We also worked with the Durban ICC on developing their greening approach and infrastructure for the event.</p>	<p>eThekweni Municipality: Environmental Planning &amp; Climate Protection Department</p>
<p><b>KwaZulu Natal Craft Cluster Business Plan</b></p> <p>FutureWorks was appointed to develop a craft cluster business plan that will assist the department to establish craft clusters within the KZN Province. These clusters are aimed at improving competitiveness within the craft industry.</p>	<p>Department of Economic Development &amp; Tourism KZN</p>



<p><b>KZN Nqutshini Alien Species Removal and Community empowerment Project</b></p> <p>FutureWorks was appointed to develop a business plan for the implementation of this project. FutureWorks was further appointed to do the implementation of the project. The project aimed at rehabilitating a community conservation area near the Amatikulu area to ensure that it attracts enough visitors in the area to promote Tourism as well as increase biodiversity and ecosystem services.</p>	<p>Department of Environmental Affairs</p>
<p><b>KZN Sodwana Community Lodge Project</b></p> <p>FutureWorks has been appointed to develop a business plan and implementation of this project. The project is aimed at developing the Community Lodge for the Amangwne Community in Mbazwane to work as accommodation facility for tourists visiting the area.</p>	<p>Department of Environmental Affairs</p>
<p><b>Pre-feasibility study for the establishment of an Independent Analytical Laboratory for Natural Products in the Eastern Cape.</b></p> <p>A comprehensive feasibility study was conducted, not only to understand the current production status and capability of the region but also to determine potential export markets, defining size, quantity and analytical requirements.</p>	<p>Eastern Cape Development Corporation</p>
<p><b>Project Management: eThekweni Community Reforestation Programme</b></p> <p>FutureWorks has been appointed by the eThekweni Municipality to project manage the Community Reforestation Programme. This involves the drafting of a business plan; the management of stakeholder partnerships with regards to design, funding and implementation of projects; the management of administration of the Reforestation Programme; monitoring and evaluation of performance and impact of the programme; management of financial resources allocated to the programme; to oversee and input into the programme communication and marketing strategies; and to ensure that while the projects fulfil their financial audit requirements, they also fulfil their environmental, green economy and sustainable development targets.</p>	<p>eThekweni Municipality</p>
<p><b>Sisonke &amp; Amajuba One Village One Product (OVOP)</b></p> <p>FutureWorks was appointed to develop four unique products respectively in Amajuba District municipality and Sisonke District municipality. This project aimed to empower crafters from a village to mass produce craft products using available natural resources from their area.</p>	<p>Department of Economic Development &amp; Tourism KZN</p>
<p><b>Sisonke Arts &amp; Craft Shop Development</b></p> <p>FutureWorks was appointed to design and renovate a shop within the Sisonke Farmers Market to suit the standard of a craft Shop to be utilised to market and sell the Sisonke Craft brand.</p>	<p>Sisonke Development Agency</p>
<p><b>Sisonke Farmers Market</b></p> <p>FutureWorks was contracted by the Sisonke Development Agency (SDA) to develop an Arts and Crafts curio shop within the Farmers Market. This will include the management of the following tasks:</p> <ul style="list-style-type: none"> <li>- Develop and conceptualise the architectural design</li> <li>- Precedent study research process</li> <li>- 3D modelling</li> <li>- Working drawings</li> <li>- Set-up and construction of the Arts and Crafts curio shop</li> </ul>	<p>Sisonke Development Agency</p>
<p><b>The development of the KZN Visual Arts and Craft Strategy</b></p> <p>FutureWorks was appointed to develop a provincial craft strategy that will assist the industry to grow.</p>	<p>Department of Economic Development &amp; Tourism KZN</p>
<p><b>The establishment of Ugu Women In Business Office</b></p> <p>FutureWorks was appointed to develop a database for women in business within the Ugu districts and set-up an office where these women could get business information &amp; support.</p>	<p>Department of Economic Development &amp; Tourism KZN</p>

<p><b>UGu Timber beneficiation Strategy</b> Ugu Timber Beneficiation Study focussed on developing and providing both strategic and detail guidance for the future development of the Timber Industry within the district, as well as its alignment with both the development initiatives of local Municipalities within the district as well as with existing wider National and Provincial policies, strategies and guidelines.</p>	Ugu District Municipality
<p><b>Umzinyathi Craft Commercialisation Programme</b> FutureWorks was appointed to develop craft products and link the products to markets.</p>	Department of Economic Development & Tourism KZN
<p><b>Zululand Craft Commercialisation Programme</b> FutureWorks was appointed to develop craft products and link the products to markets.</p>	Department of Economic Development & Tourism KZN
<p><b>Development of a National Invasive Species Strategy &amp; Action Plan</b> FutureWorks was engaged by the CSIR on behalf of the Dept. of Environmental Affairs to develop a strategy for funding a national biological organisms invasive management strategy.</p>	CSIR, National Department of Environmental Affairs
<p><b>NEWATER – Orange River Basin Water Vulnerability Study.</b> FutureWorks (Nicci Diederichs and Myles Mander) was appointed by Oxford University to undertake the development of a Water Vulnerability Framework, including development of indicators, and implementation of an assessment under this framework in respect of water vulnerability in the Orange River international watershed. The project involved collection and reporting on state of the river catchment, and analysis of information in terms of identifying social, economic and infrastructure water vulnerability.</p>	Oxford University
<p><b>Strategic Environmental Assessment: Durban South</b> FutureWorks was appointed to prepare a Spatial Development Plan for the South Local Area of Durban, from the city centre to Umbogintwini. This included a strategic environmental assessment of this area.</p>	eThekweni Municipality
<p><b>Strategic Environmental Assessment: Giba Gorge Precinct</b> FutureWorks was appointed to undertake a Strategic Environmental Assessment and precinct planning process for the Giba Gorge Precinct, West of Durban.</p>	eThekweni Municipality
<p><b>Strategic Environmental Assessment: Northern High Priority Public Transportation Corridor (Durban)</b> FutureWorks was appointed to undertake a Strategic Environmental Assessment of the municipality's proposed Northern HPPT corridor. This formed part of the development of a Plan for the development of the corridor.</p>	Anton Aiello and eThekweni Municipality
<p><b>Strategic Environmental Assessment: uMnini Traditional Authority Area</b> Nicci Diederichs was appointed by the eThekweni Municipality to undertake a Strategic Environmental Assessment for the uMnini Traditional Authority Area, South of Durban, to inform the development of an infrastructure, housing and agriculture development plan for the area.</p>	eThekweni Municipality
<p><b>Strategic Environmental Assessment: Wild Coast</b> FutureWorks was appointed as an expert SEA consultant by SRK Consulting to assist them in reviewing and finalising the SEA report that they had prepared for the Wild Coast.</p>	SRK Consulting
<p><b>Cato Manor Arts &amp; Crafts Business Support</b> FutureWorks was appointed to assess the existence of craft skills within the Cato manor community then support the community to develop craft products, establish enterprise for trading and link the enterprise to craft markets for sustainability.</p>	eThekweni Municipality: Cato Manor ABM

<p><b>Craft Enterprise Mentorship Programme</b></p> <p>FutureWorks was appointed to develop a Craft Enterprises Mentorship Programme to introduce appropriate business support, networks and coaching through analysing the current business status quo, so as to address issues/concerns and exploit available opportunities, thus giving crafters confidence to grow and sustain their craft enterprises.</p> <p>Some of the Mentorship Benefits Include:</p> <ul style="list-style-type: none"> <li>• Development of entrepreneurship</li> <li>• Increase in morale and motivation</li> <li>• Fostering of shared values and team work</li> <li>• Enhancement of leadership and people management skills for managers</li> <li>• Development of cross-organisational networks</li> </ul>	<p>Sheifco 317 Investments cc</p>
<p><b>EIA Project Management Training Course</b></p> <p>FutureWorks was appointed by the eThekweni Environmental Planning and Climate Protection Department to develop and rollout a 1-day training course and handbook for municipal project managers. This training course and handbook assists municipal project managers in effectively meeting the legal environmental obligations of development and infrastructure projects that require some form of environmental assessments or authorisation.</p> <p>The Training Includes:</p> <ul style="list-style-type: none"> <li>• Environmental Impact Assessments (EIA's)</li> <li>• Basic Assessments (BA's)</li> <li>• And development of Environmental Management Plans (EMP's)</li> </ul>	<p>eThekweni Municipality: Environmental Management Department</p>
<p><b>Ethekweni Arts &amp; Craft Capacity Building Workshops</b></p> <p>FutureWorks was appointed to disseminate Visual arts and Craft Industry information to the communities around eThekweni who are in the craft industry and those who aspire to be in the industry.</p>	<p>Ethekweni Municipality: IMS</p>
<p><b>eThekweni SMME exhibition training -</b></p> <p>FutureWorks was appointed to train the eThekweni SMMEs [partaking in the Annual Durban Business Fair 2008. These SMME were trained in preparation for the exhibition. The pre-exhibition, during exhibition and post exhibition training was conducted as well as a short mentorship programme to monitor progress post exhibition.</p>	<p>Ethekweni Municipality: Business Support</p>
<p><b>Pre-exhibition Tradeport Training</b></p> <p>FutureWorks was appointed to facilitate pre-exhibition training to the crafters selected by Tradeport Durban to attend an international exhibition.</p>	<p>Tradeport Durban</p>
<p><b>Shell Livewire Training</b></p> <p>This training targeted youth who aspired starting their own businesses. The youth was trained on how to start and manage their own businesses.</p>	<p>Shell SA (Pty) Ltd</p>
<p><b>South African Hand Made Exhibition Training</b></p> <p>FutureWorks was appointed by the DTI Creative Industries Sector to facilitate workshops on Pre and Post Exhibition training with the purpose of assisting selected enterprises in their preparation for the South African Hand Made Collection exhibition as well as the follow through process after the exhibition.</p>	<p>Department of Trade and Industry - Creative Industries Sector</p>
<p><b>Timber Growers Facilitation</b></p> <p>The aim of this project was to develop a group management system that is appropriate to the scale of small timber grower operations and taking into consideration the unique characteristics of the tenure systems of the small scale growers operating in areas under traditional Authority and communal land tenure. Furthermore the project aimed to design and implement an integrated management system for sustainable forest management that enables small growers to comply with the management requirements and standards required for certification (including for example FSC or compliance with the national PCI&amp;S). The management system would be developed for group certification of small-scale growers in a particular municipal area, regardless of the company they sell their timber to (e.g. Sappi, Mondi, NCT etc.).</p>	<p>Institute of Natural Resources (INR)</p>